

CMC-B

Capacitors contactors



Description

CMC-B series are contactors adjusted for switching single-step or multiple step capacitor banks. They have high operating times and a high electrical endurance that make the most robust and durable contactors.

Applications

They are installed in switching single-step or multiple step capacitor banks.

Technical features

Electrical features	Operating voltage	230...690 V*
	Frequency	50 / 60 Hz
	Rated operational current at 400 V	11...116 A*
	Coil voltage	230 V 50-60 Hz
	Rated impulse withstand voltage	8 kV
	Coil voltage tolerance	0,85...1,1 Un*
	Frequency of switching operations	100...240 s/h*
Build features	Insulation rating	690...1000 V*
	Protection Degree	IP 00 / IP 20*
Mechanical features	Terminal screw	M4
	Screw head	PZ2
Environmental conditions	Working temperature	-25...+55 °C
	Relative Humidity	5...95% without condensation
	Altitude	2000 m
Standards	IEC 60947-1, IEC 60947-4	

* Depending on model

References

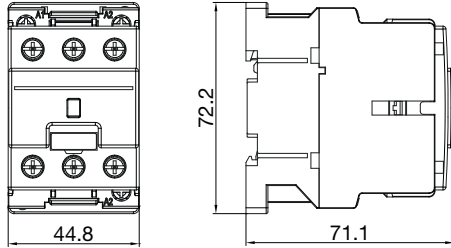
Type	Code	Maximum operation power (kvar)				Dumping resistors
		230 V	400-440-480 V	500-550 V	660-690 V	
CMC-7,5B	R281A5	4	7,5	9	11	not available
CMC-12B	R281A6	6,7	12,5	15	18	included
CMC-20B	R281A4	11	20	24	30	included
CMC-32B	R281A8	14	25	30	35	included
CMC-40B	R281A1	20	30	35	40	included
CMC-75B	R281A9	29	50	60	70	included
CMC-85B	R281A3	32	60	70	80	included
CMC-150B	R281AD	45	80	100	115	not available

CMC-B

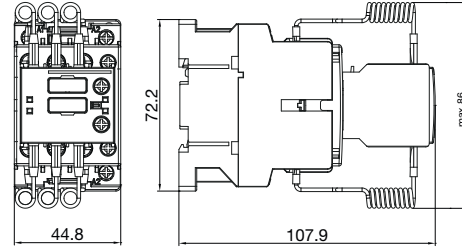
Capacitors contactors

Dimensions

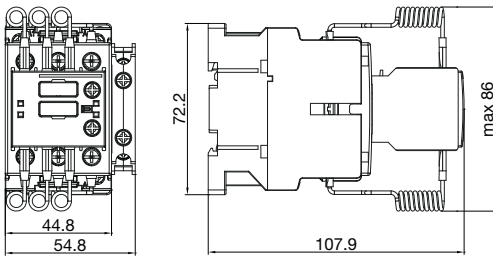
CMC-7,5B



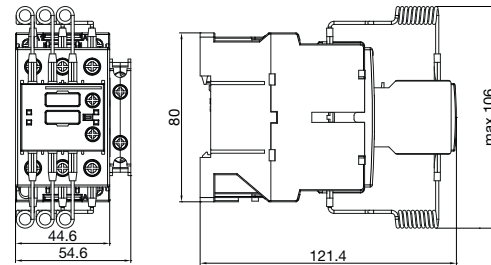
CMC-12B



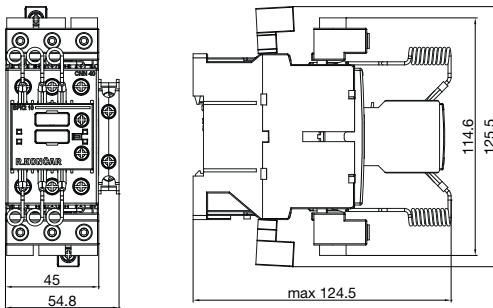
CMC-20B



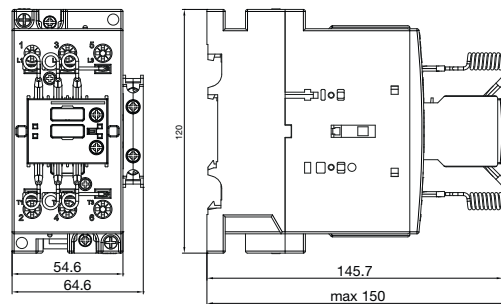
CMC-32B



CMC-40B



CMC-75B / CMC-85B



CMC-150B

