

WG Series

WGC

Earth leakage transformers WGC Series



Description

This new range presents a series of improvements above all in the installation of equipment in switchboards.

Along with the usual installation fixtures, we add the possibility of doing it with a DIN rail by means of an accessory, which would facilitate its installation.

The **WGC** series earth leakage transformers have a greater immunity to transitory type current peaks that usually cause differential protection triggers.

The earth leakage transformers of the **WGC** Series have been designed to work with the relays of the **WGC** Series. The sensitivity (trigger current) of the transformer-relay set is established by the associated relay.

Features

Electrical insulation	
Safety	IEC 60664-1 / IEC 60664-3
Maximum assigned service Voltage	720 V
Assigned Impulse Voltage / pollution	3 kV / III
Measurement circuit	
Assigned transformation ratio, Kn	30 / 0,06 A
Accuracy in measurement	10 ... 15%
Direct thermal current	60 A
Short-circuit thermal current, Ith	1,8 kA / 1 seg
Dynamic current, Idyn	2.5 Ith
Operating conditions	
Operating temperature	-20 °C ... +70° C
Relative humidity	95%
Maximum altitude	2000 m
Mechanical features	
Terminal protection	IP20 (IEC 60529)
Screw down fasteners	M-5
DIN rail (with accessory)	See code below
Casing material / color	Lexan 923 / RAL 7035
Self-extinguishing class	UL94V-0
Product standards	IEC 60044-1
Connection	
Two wire (S1-S2) connection type	Screw down fasteners (screw typw pzl)
Dimensions of rigid/flexible conductors	0,1 a 2,5 mm2 / 27 ... 12 AWG
Connection to the protection and measurement devices (RCD, RCM)	
Cabling with wire section $\geq 1 \text{ mm}^2$	0 ... 1 m
Cabling of braided and shielded wire section $\geq 1 \text{ mm}^2$	0 ... 10 m

WG Series

WGC

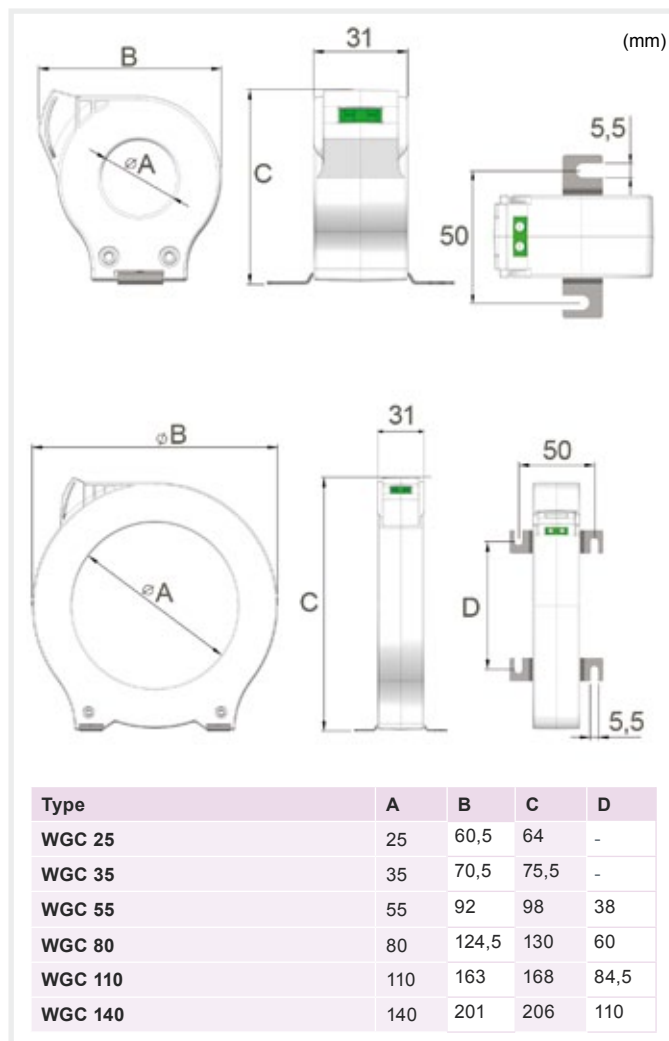
Earth leakage transformers WGC Series



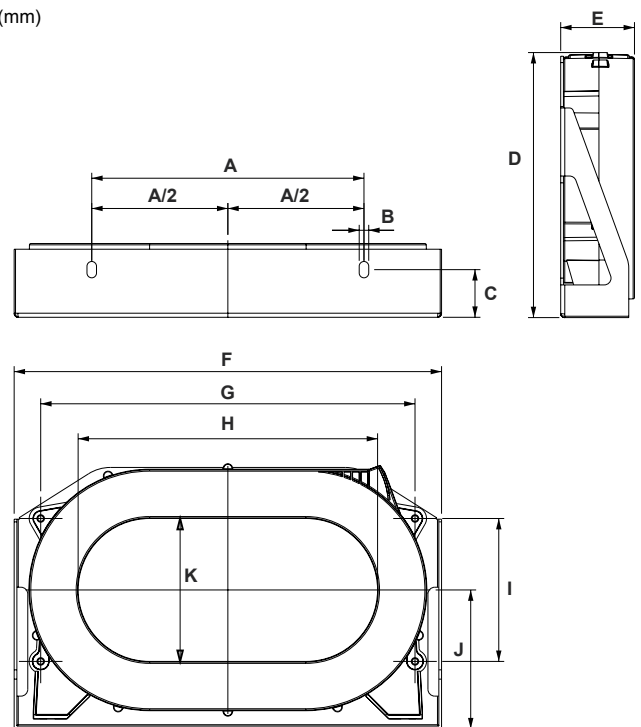
References

Useful diameter (mm)	Weight (g)	I_n (A)	Type	Code
25 Ø	80	acc. relay	WGC 25	P10151
35 Ø	120	acc. relay	WGC 35	P10152
55 Ø	160	acc. relay	WGC 55	P10153
80 Ø	300	acc. relay	WGC 80	P10154
110 Ø	420	acc. relay	WGC 110	P10155
140 Ø	760	acc. relay	WGC 140	P10156
220 x 105	3740	acc. relay	WGC-220x105	P10158
350 x 150	7800	acc. relay	WGC-350x150	P10159
500 x 200	11300	acc. relay	WGC-500x200	P10160
DIN rail mounting accessory for WGC-35 up to WGC-210, and WGC-25, WGC-35 and WGC-55			PA-TC/WG	P19921

Dimensions



(mm)



Type	WGC-220x105	WGC-350x150	WGC-500x200
A	200	340	460
B	7	7	7
C	35	30	40
D	54,2	50,2	306
E	195	279	64
F	314	479	614
G	275	430	550
H	220	350	500
I	105	165	180
J	102	143	155
K	105	150	200

למידע נוסף



0732001311



www.ateka.co.il



אפקון
מקבוצת
שלמה

אטקה